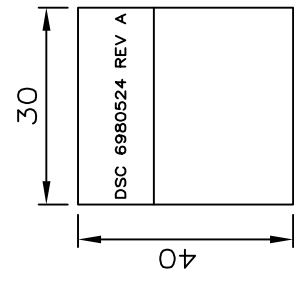


REV.	ECO. NO.	APPD
A		WUFIHU 12/19/16

2	BLACK	TIN
1	RED	TIN
J1	WIRE COLOR	J2

WIRE CONNECTION TABLE

5	LABEL	1PC	W=30.0MM, L=40.0MM, CONTENT: SEE "A"
4	CONTACT	2PCS	MATERIAL: PHOSPHOR BRONZE, TIN PLATED WIRE RANGE: #28-#22 MOLEX P/N: 0670-1039 WIRE RANGE: #28-#22 JMT P/N: A250510P-2
3	2P HOUSING	1PC	MATERIAL: NYLON 66, UL94V-0, COLOR: MILKY YELLOW PITCH: 2.50MM, 1X2 MOLEX P/N: 5037-5023 JMT P/N: A2505H02-2P
2	WIRE	1PC	UL1061 #26, OD=Ø1.0±0.05MM, COLOR: BLACK JACKET: PVC E170689 & E108485 E72332
1	WIRE	1PC	UL1061 #26, OD=Ø1.0±0.05MM, COLOR: RED JACKET: PVC E170689 & E108485 E72332
No.	ITEM	Q'TY	DESCRIPTION



- NOTES:
- ALL DIMENSIONS ARE "MM".
 - ANY OPEN, MISWIRING, SHORT & INTERMITTENT ARE NOT PERMITTED.
 - CONDUCTIVE RESISTANCE: 2.0Ω
INSULATION RESISTANCE: 20MΩ
HI-POT VOLTAGE: 300V DC
HI-POT DURATION: 10mS
 - THE PRODUCT MUST BE COMPLY WITH THE DIRECTIVE OF ROHS.
 - PACKAGE: 1PC/BAG.

PART NO. (INTENDED USE)		TITLE: CABLE HARNESS, BATTERY HEADER 2.50MM CONNECTOR TO FLYING LEADS	
6980524 REV A		6980524 REV A	
APPD: WUFIHU 12/19/16		DWG NO.: GL-GH791	
CHKD: WUZUJIAN 12/19/16		SCALE: SHEET 1/1	
DR: JASON 12/19/16		REV. A	

RoHS compliant

G-LINKS CO.

8 02009A