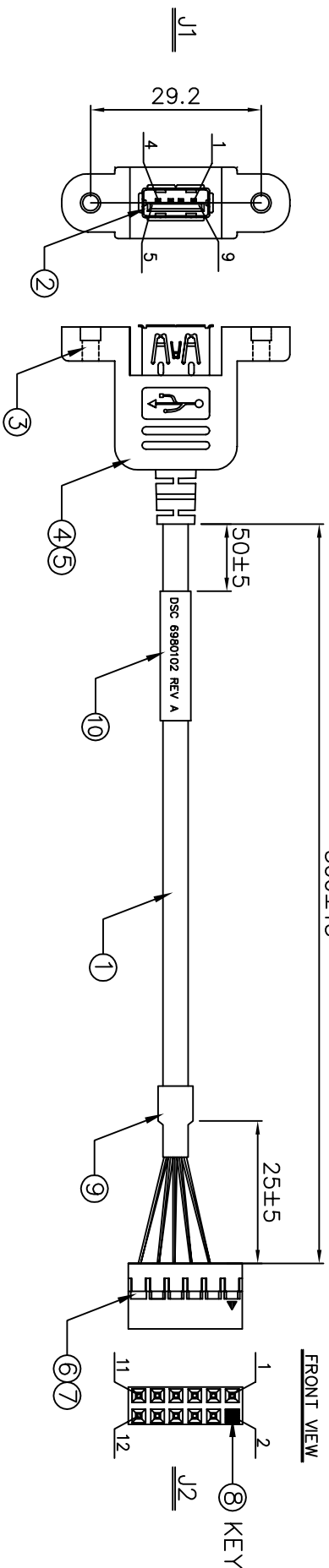
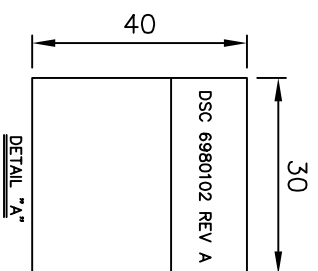


REV.	ECONO.	NO.	APPD
A	REL.	LARRY	03/13/20



SHELL	DRAIN		
9	ORANGE	TWIST	11
8	PURPLE	PAIR	9
7	DRAIN		7
6	YELLOW	TWIST	5
5	BLUE	PAIR	3
4	BLACK#24		10
3	GREEN	TWIST	8
2	WHITE	PAIR	6
1	RED#24		4
J1	WIRE COLOR		J3

No.	ITEM	Q'TY	DESCRIPTION
10	LABEL	1PC	W=30.0MM, L=40.0MM, CONTENT SEE "A"
9	H.S. TUBE	1PC	H.S. TUBE COLOR:BLACK
8	KEY PLUG	1PC	KEY PLUG COLOR:BLACK
7	CRIMP TERMINAL	10PCS	CRIMP CONTACT GOLD PLATED WL P/N 2004-G-P OR EQ
6	12P HOUSING	1PC	2.0MM DUAL ROWS 2X6P WL P/N 2004-H-2X6P OR EQ
5	OUTER MOLD	-	PVC COLOR:BLACK
4	INNER MOLD	-	PE COLOR:NATURAL
3	#4-40 NUT	2PCS	#4-40 NUT
2	USB 3.0 CONN	1PC	USB3.0-9P A/F SOLDER TYPE
1	CABLE	1PC	UL2725#28x2P+#28x1P+#24x2C, USB3.0 CABLE JACKET:PVC, COLOR:BLACK



No.	ITEM	Q'TY	DESCRIPTION
10	LABEL	1PC	W=30.0MM, L=40.0MM, CONTENT SEE "A"
9	H.S. TUBE	1PC	H.S. TUBE COLOR:BLACK
8	KEY PLUG	1PC	KEY PLUG COLOR:BLACK
7	CRIMP TERMINAL	10PCS	CRIMP CONTACT GOLD PLATED WL P/N 2004-G-P OR EQ
6	12P HOUSING	1PC	2.0MM DUAL ROWS 2X6P WL P/N 2004-H-2X6P OR EQ
5	OUTER MOLD	-	PVC COLOR:BLACK
4	INNER MOLD	-	PE COLOR:NATURAL
3	#4-40 NUT	2PCS	#4-40 NUT
2	USB 3.0 CONN	1PC	USB3.0-9P A/F SOLDER TYPE
1	CABLE	1PC	UL2725#28x2P+#28x1P+#24x2C, USB3.0 CABLE JACKET:PVC, COLOR:BLACK

NOTES:

1. ALL DIMENSIONS ARE "MM".
2. ANY OPEN, MISWIRING, SHORT & INTERMITTENT ARE NOT PERMITTED.
3. CONDUCTION RESISTANCE: 2Ω MAX
4. THE PRODUCT MUST BE COMPLY WITH THE DIRECTIVE OF ROHS.
5. PACKAGE: 1PC/BAG.

INSULATION RESISTANCE: 20MΩ MIN/DC 300V



X:±	XX:±	X':±	XX':±
.X:±0.5	.XXX:±	.X':±	.XXX':±

PART NO.(INTENDED USE)	TITLE:
6980102 REV A	CABLE, USB3.0 SINGLE TO 2.0MM 2X6P HOUSING
APPD: LARRY 03/13/20	DWG NO.: GL-G10102
CHKD: WUZJIAN 03/13/20	SCALE: SHEET REV.
DR: AARON 03/13/20	NONE 1/1 A

1 2 3 4 5 6 7 8 02011B